

DATE: 05/01/04
 DRAWN BY: SJH
 FILE NO.: PCBW1491

REVISIONS		
DATE	DESCRIPTION	INITIAL

TOPOGRAPHIC SURVEY
 & BUILDING DETAIL

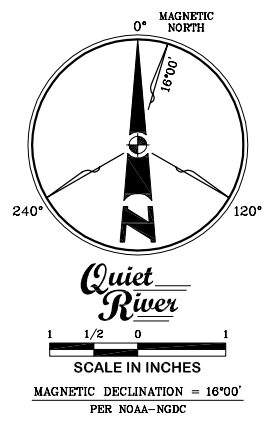
APN: 161-711-067
 1025 LOST DRIVE
 SALINAS, CALIFORNIA

Quiet River
 Land Services, Inc.
 5673 West Las Positas Boulevard, Suite 215
 Pleasanton, California 94568
 (925) 734-6788 Phone
 (925) 734-6732 Fax

EXISTING SITE CONDITIONS

LEGEND

[Symbol]	= ASPHALT	[Symbol]	= INLET
[Symbol]	= CONCRETE	[Symbol]	= LIGHT POLE
[Symbol]	= CONTROL POINT	[Symbol]	= MANHOLE
[Symbol]	= ELECTRIC VAULT	[Symbol]	= SPOT ELEVATION
[Symbol]	= FIRE HYDRANT	[Symbol]	= TELCO VAULT
[Symbol]	= FOUND MONUMENT	[Symbol]	= TEMPORARY BENCHMARK
[Symbol]	= GPS POINT	[Symbol]	= UTILITY POLE
[Symbol]	= GUY ANCHOR	[Symbol]	= WATER VAULT

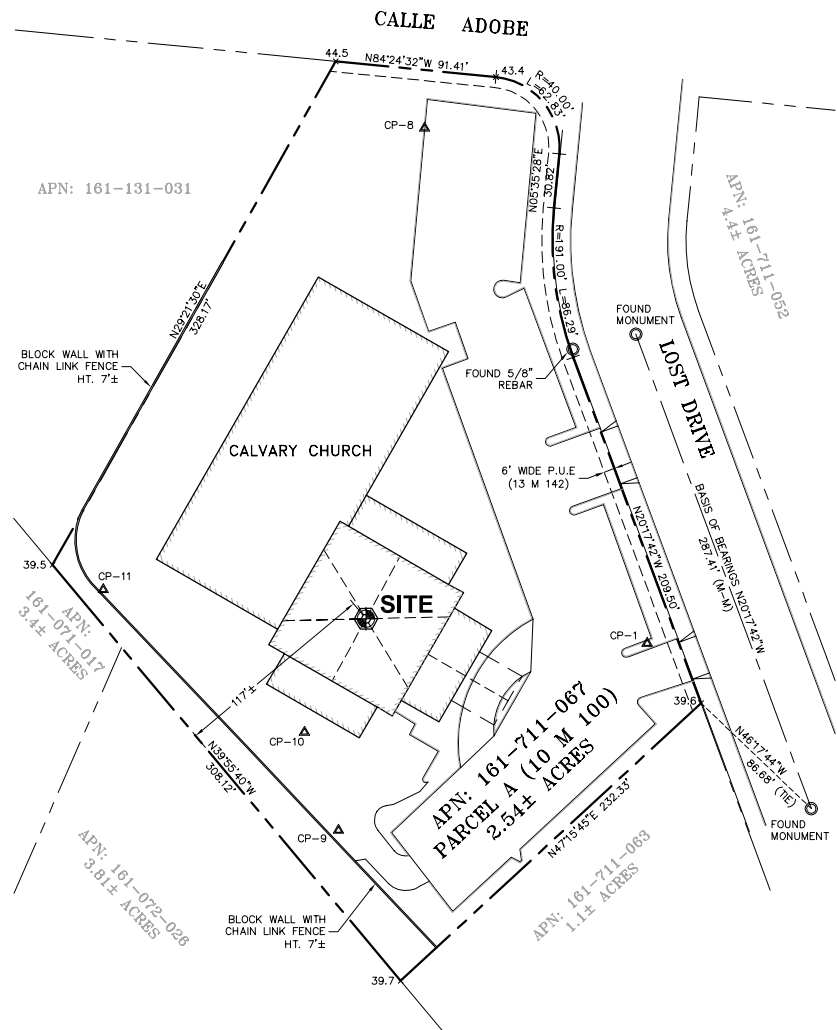


1 ENLARGED SITE PLAN
 SCALE: 1" = 20'

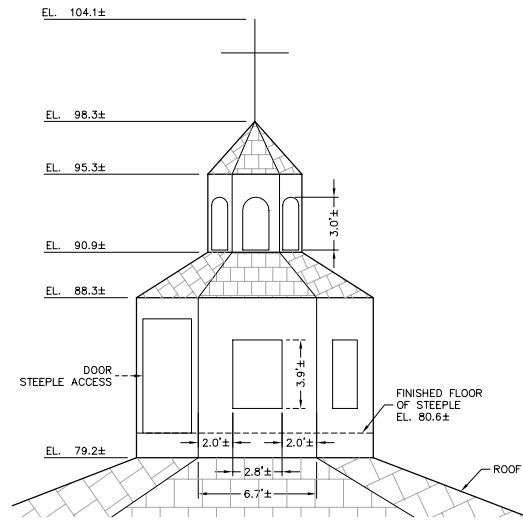
EXAMPLE

C1
 OF 2 SHEET

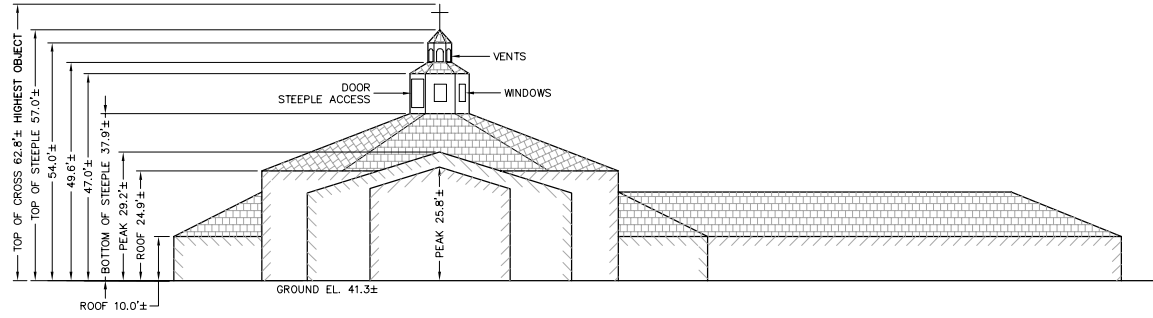
S:\Samples\PCBW1491.dwg Jun. 03, 2004 - 4:39pm rps



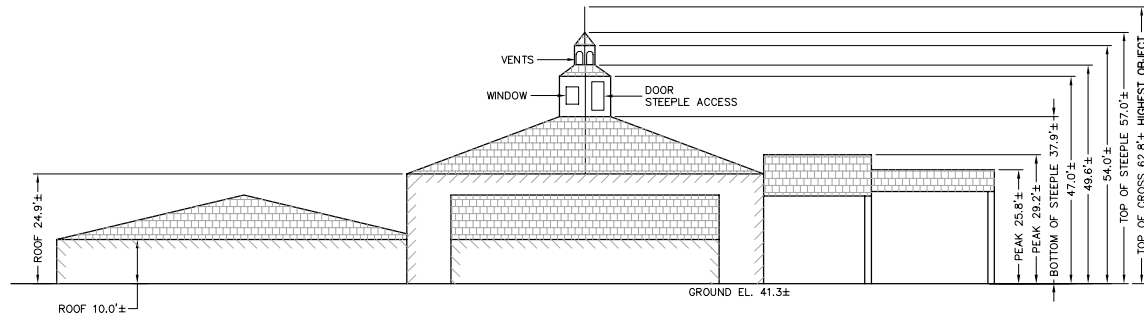
6 SITE PLAN
SCALE: 1" = 50'



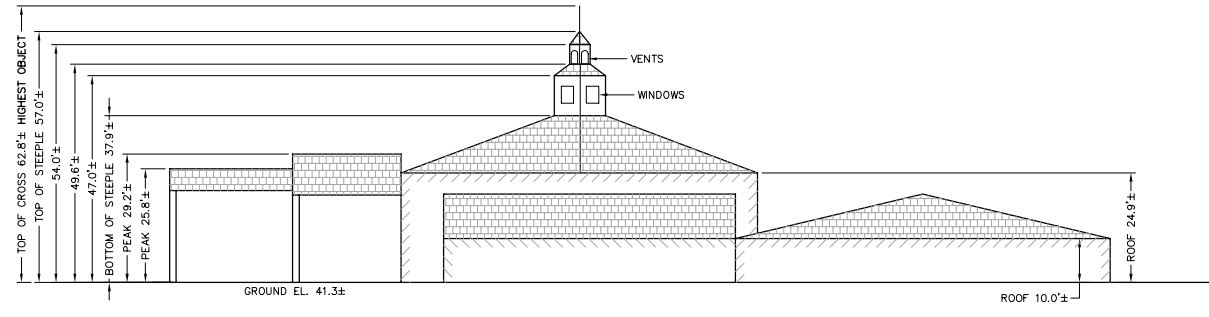
5 STEEPLE DETAIL
SCALE: 1" = 5'



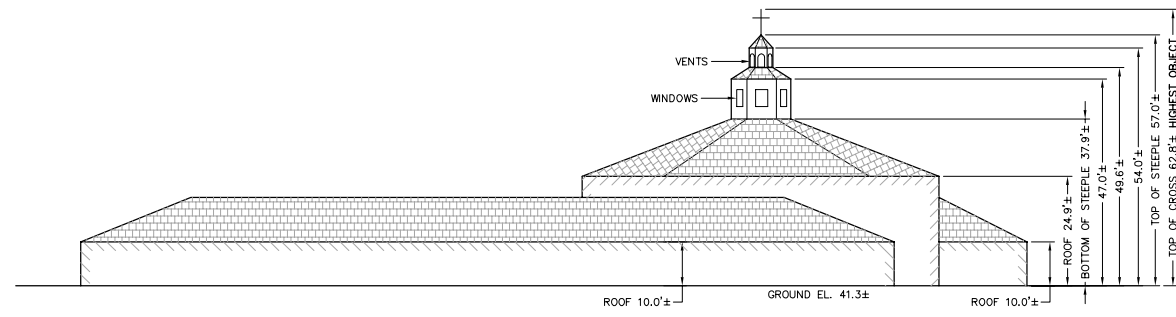
1 EASTERLY ELEVATION
SCALE: 1" = 20'



2 SOUTHERLY ELEVATION
SCALE: 1" = 20'



3 NORTHERLY ELEVATION
SCALE: 1" = 20'



4 WESTERLY ELEVATION
SCALE: 1" = 20'

EXAMPLE

DATE: 05/01/04
DRAWN BY: SJH
FILE NO.: PCBW1491

REVISIONS		
DATE	DESCRIPTION	INITIAL

TOPOGRAPHIC SURVEY
& BUILDING DETAIL

APN: 161-711-067
1025 LOST DRIVE
SALINAS, CALIFORNIA

Quiet River
Land Services, Inc.

5673 West Las Positas Boulevard, Suite 215
Pleasanton, California 94588
(925) 734-6788 Phone
(925) 734-6732 Fax

EXISTING SITE CONDITIONS

S:\Samples\PCBW1491.dwg Jun. 03. 2004 - 4:39pm rps