

**TOPOGRAPHIC & BOUNDARY SURVEY**

**COMMUNITY CENTER**  
**888 NORTH SECOND STREET**  
**LANDS OF SMITH**  
**875 NORTH SECOND STREET**

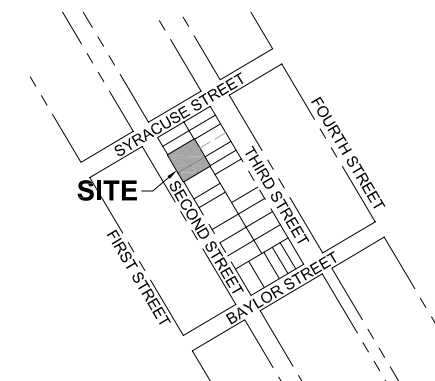
**CITY OF PLEASANTON ALAMEDA COUNTY CALIFORNIA**

SCALE: 1" = 10'

MAY, 2006

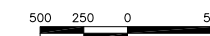
*Quiet River* Land Services, Inc.

5673 West Las Positas Boulevard, Suite 215  
 Pleasanton, California 94588  
 (925) 734-6788 Phone  
 (925) 734-6732 Fax



**LOCATION MAP**

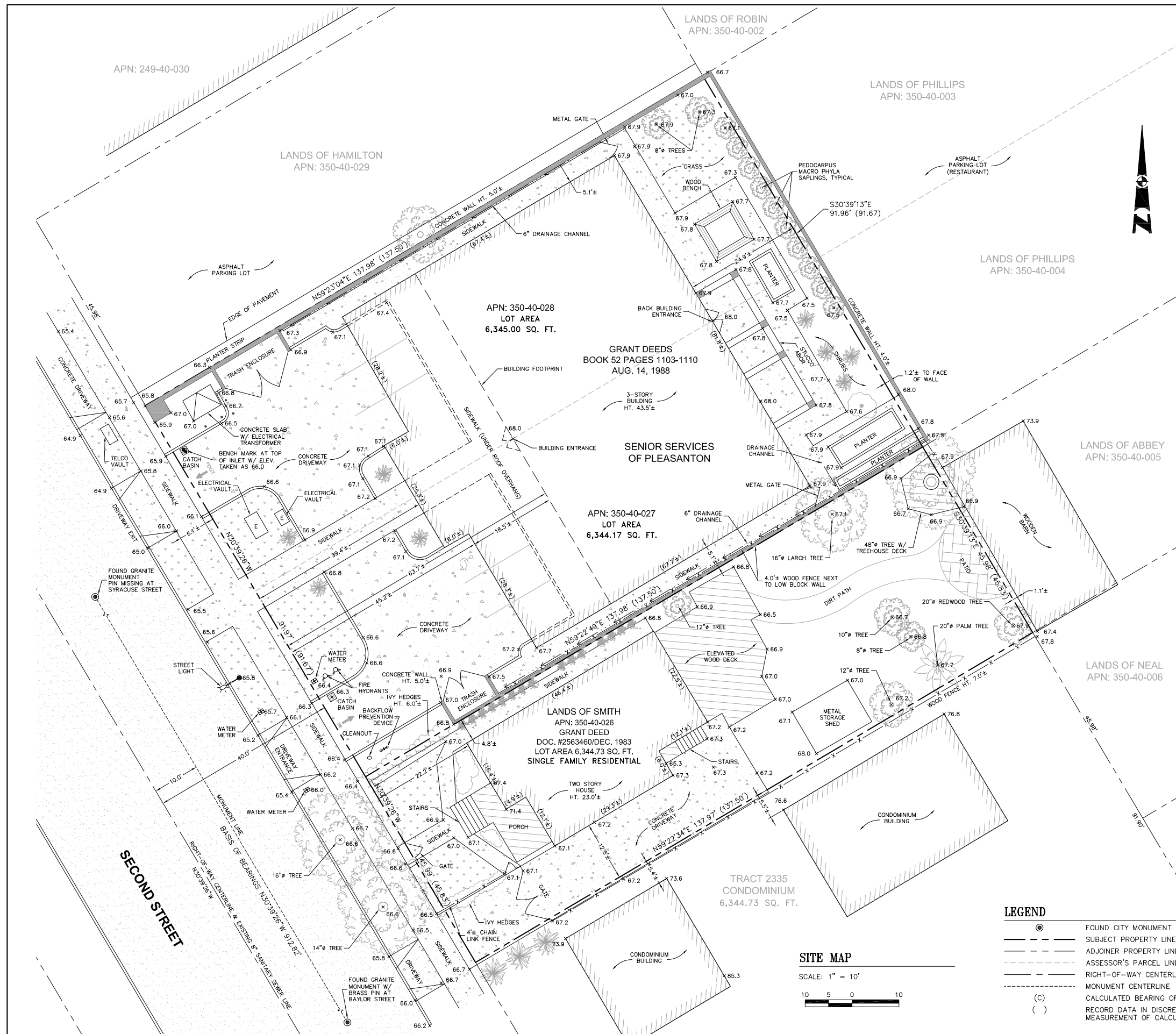
SCALE: 1" = 500'



**NOTES**

**BASIS OF BEARINGS**

**SURVEYOR'S STATEMENT**



**SITE MAP**

SCALE: 1" = 10'



**LEGEND**

- FOUND CITY MONUMENT
- SUBJECT PROPERTY LINE
- - - ADJOINER PROPERTY LINE
- · - · - ASSESSOR'S PARCEL LINE
- · - · - RIGHT-OF-WAY CENTERLINE
- · - · - MONUMENT CENTERLINE
- (C) CALCULATED BEARING OR DISTANCE
- ( ) RECORD DATA IN DISCREPANCY FIELD
- MEASUREMENT OF CALCULATION